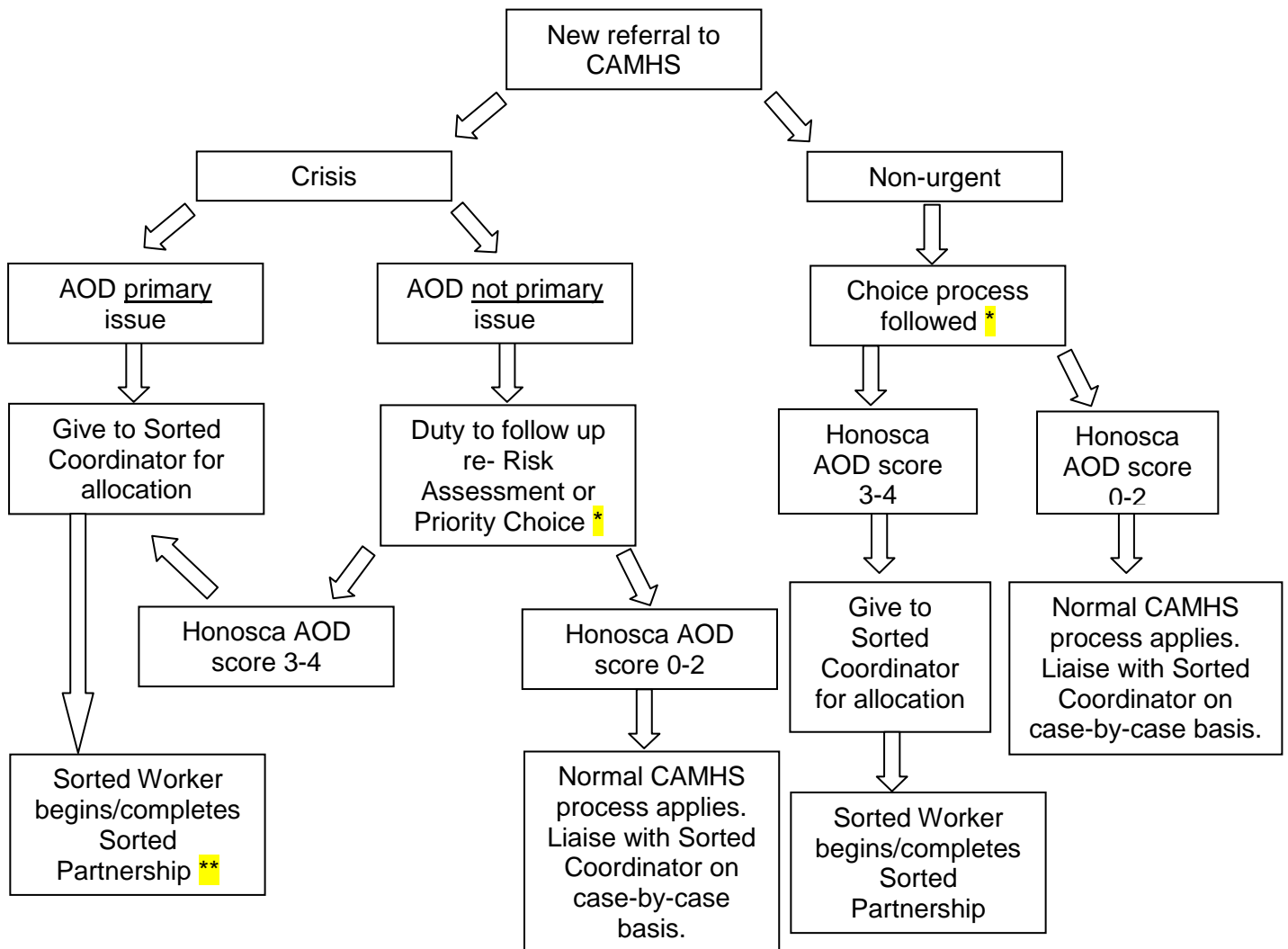


Referral pathway for AOD/CEP referrals to CAMHS



*Following Choice or Priority Choice the C/PC clinician will complete Honosca, type C/PC assessment and save the assessment in Patient Correspondence as well as Assessments for Uploading. The C/PC clinician will also write to the young person (with copies to the referrer and others with consent) regarding the outcome of the C/PC assessment. During the C/PC appointment the consent/sharing info form will also be completed to the degree that is appropriate at this appointment. Note-Consent/Sharing info plan is an ongoing process.

**See 'Sorted Referral Pathway' for process.