



# New Zealand Family Violence Clearinghouse


Your national centre for family and whānau violence  
research and information

[nzfvc.org.nz](http://nzfvc.org.nz)



# The rationale

*....that access to high-quality information is critical in ensuring family violence prevention strategies and initiatives are effective and achieve the greatest possible success.*

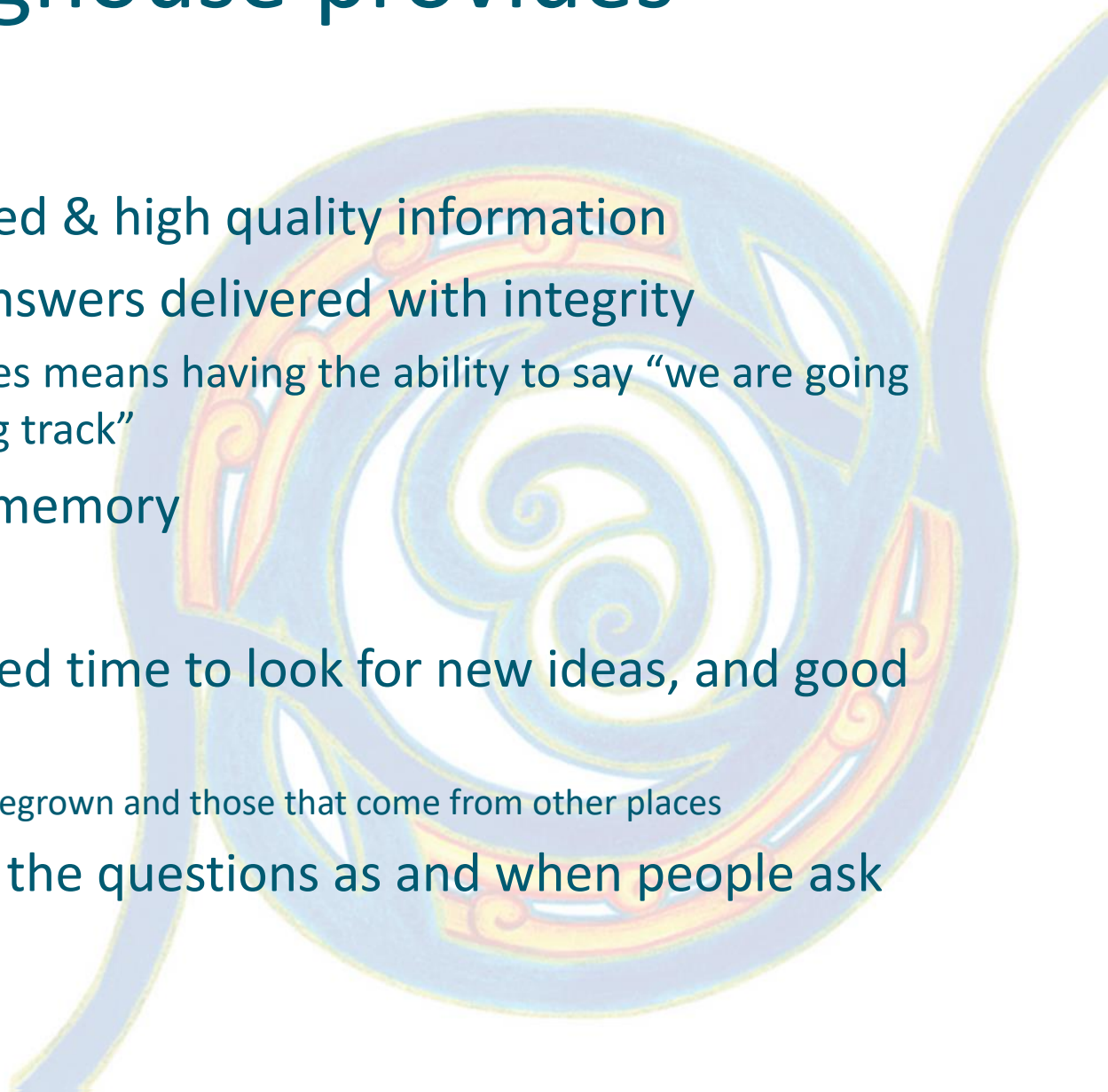


# Ways of making knowledge accessible

- 
- Website
  - Newsletter | Pānui
  - Statistics
  - News and Events Alerts
  - Webinars
  - Seminars/conferences
  - Issues Papers
  - Selected bibliographies
  - Literature searches
  - Timeline of family violence responses from 1867
  - Lending library
  - Responding to queries
  - Community engagement
  - Information for:
    - Policy makers
    - Practitioners
    - Researchers
    - Students
    - Media
    - People affected by violence
    - General public


# The Clearinghouse provides

- Access to
  - Reputable, trusted & high quality information
  - Information & answers delivered with integrity
    - which sometimes means having the ability to say “we are going down the wrong track”
  - An institutional memory
- People
  - with the dedicated time to look for new ideas, and good ideas
    - those that are homegrown and those that come from other places
  - who can answer the questions as and when people ask them





# Website




New Zealand  
Family Violence  
Clearinghouse

Website Library Search

Feeling unsafe?  
Find support services. If you are in immediate  
danger, call 111

[Home  
Kāinga](#)[News  
Te Kāea](#)[Events  
E aha ana](#)[Our work  
Ā mātou mahi](#)[Statistics  
Tatauranga](#)[Covid-19](#)[Te Whare Māori](#)

National  
centre for  
family and  
whānau  
violence  
research and  
information




**Have your say**  
**Mahi tahi tōu kōrero**

Community  
engagement on a  
National Strategy  
and Action Plans

Enter here


Latest News & Events



NEWS 29 Jun 2021

World Elder Abuse  
Awareness Day 2021 -  
new campaign, calls to  
fund prevention

[Read article](#)



NEWS 21 Jun 2021

New research explores  
the impacts of adverse  
childhood experiences in  
New Zealand

[Read article](#)

EVENT

Strangulation in the  
context of Intimate  
Partner Violence: A  
public health issue -  
Porirua

DATE  
06 Jul 2021

LOCATION  
Porirua

[Event details](#)

EVENT

Grooming - Safeguarding  
Children training  
webinar

DATE  
06 Jul 2021

LOCATION  
Online

[Event details](#)

# Website



## Statistics

New Zealand and international family and sexual violence statistics.

---



## Our Work

Clearinghouse services, data summaries, issues papers, timeline, bibliographies, newsletters, conferences, seminars.

---



## Library catalog

Search the library for research, reports, DVDs and more. Borrow our books or access resources online.

---



## Quick Topic Search

Use the topic links to do a quick search on frequently searched topics. Searches can be done using English or Te Reo Māori topic terms.

---



## Kaupapa Māori

Kaupapa Māori, Rangahau Māori, Rauemi mo Māori.

---



## FAQ

Frequently asked questions about family violence.

---



## Education & Training

Education and training providers, courses, online learning, scholarships.

---



## Recommended reading

Selected key research, resources, conceptual frameworks, tools and more.

---

# Quick Topic Search

## Statistics, related factors and responses

Statistics	Prevention	Culture
Socio-economic factors	Primary prevention	Gender
Legislation	Intervention/treatment	Parenting
Policy	Collaboration	
Disasters & pandemics	Evaluation	

## Types of violence

Intimate partner violence	Physical abuse	Homicide
Child abuse	Psychological/emotional abuse	Suicide/self-harm
Elder abuse	Sexual violence	Bullying
Violence towards parents	Neglect	Financial abuse
Sibling violence	Discipline	Technology and abuse
Animal abuse		

## Sector involvement

Justice	Education	Health
Restorative justice	Social services	Substance abuse
Protection orders	Religion/spirituality	Reproductive health
Care and protection	Communities	
Custody/contact/access	Media	

# Quick Topic Search

## Types of violence

Intimate partner  
violence

Child abuse

Elder abuse

Violence towards  
parents

Sibling violence

Animal abuse

Physical abuse

Psychological/emotional  
abuse

Sexual violence

Neglect

Discipline

Homicide

Suicide/self-harm

Bullying

Financial abuse

Technology and  
abuse



# Library



If you are in imm

[Return to the NZFVC website](#)

Search

Library catalog ▾

an:9831 or an:9483 or an:7205 or an:5989

Go

[Advanced search](#) | [Authority search](#)

[Home](#) > Results of search for 'an:9831 or an:9483 or an:7205 or an:5989'

## Refine your search

### Availability

[Limit to currently available items.](#)

### Authors

[Dragiewicz, Molly](#)  
[Flynn, Asher](#)  
[Henry, Nicola](#)  
[Powell, Anastasia](#)  
[Woodlock, Delanie](#)  
[Show more](#)

### Item types

[Access online](#)  
[Book](#)  
[Journal article](#)  
[Report](#)  
[Short paper](#)  
[Show more](#)

Your search returned 84 results.

1 2 3 4 5 Next » Last

Publication/Copyright date: Newest to oldest ▾

[Select all](#) [Clear all](#) |

1. **[To send or not to send nudes : New Zealand girls critically discuss the contradictory gendered pressures of teenage sexting](#)**  
by Thorburn, Brandee | Gavey, Nicola | Single, Grace | Wech, April | Calder-Dawe, Octavia | Benton-Greig, Paulette.  
Women's Studies International Forum, 2021, 85: 102448  
Elsevier, 2021  
DOI: [10.1016/j.wsif.2021.102448](#)
2. **[Technology-facilitated domestic violence against immigrant and refugee women : a qualitative study](#)**  
by Henry, Nicola | Vasil, Stefan | Flynn, Asher | Kellard, Karen | Mortreux, Colette.  
Journal of Interpersonal Violence, 2021, Advance online publication, 13 March 2021  
Sage, 2021  
DOI: [10.1177/08862605211001465](#)
3. **[Development and validation of the TAR Scale : a measure of technology-facilitated abuse in relationships](#)**

# Research



- [NZFVC Issues Paper #15: Historical trauma and whānau violence](#)  
*Leonie Pihama, Ngaropi Cameron and Rihi Te Nana, 2019*
- [Historical trauma and whānau violence webinar](#)  
*Leonie Pihama, 2019*



- [Adverse childhood experiences in New Zealand and subsequent victimization in adulthood: findings from a population-based study](#)  
*Janet Fanslow, Ladan Hashemi, Pauline Gulliver and Tracey McIntosh, 2021*



- [Shifting the Line](#)  
New research on engaging boys and young men in sexual violence prevention  
*Nicola Gavey, Octavia Calder-Dawe, Kris Taylor, Jade Le Grice, Brandee Thorburn, Sam Manuela, Makarena Dudley, Senuri Panditharatne, Riane Ross, Angela Carr and Robin Murphy, 2021*

# Mailing lists

## Stay connected

Subscribe to monthly Pānui newsletters

Monthly newsletters



## Keep up to date

Get notified when news and events are posted

News and Event alerts

## About the New Zealand Family Violence Clearinghouse

The New Zealand Family Violence Clearinghouse is your national centre for research and information on family and whānau violence in Aotearoa New Zealand. We provide information and resources for people working towards the elimination of family violence. The Clearinghouse is based at the School of Population Health, University of Auckland.

# New Zealand Family Violence Clearinghouse

Located at the University of Auckland  
**Grafton campus**  
from 25 November 2019

[Charlotte.moore@auckland.ac.nz](mailto:Charlotte.moore@auckland.ac.nz)

[info@nzfvc.org.nz](mailto:info@nzfvc.org.nz)

[nzfvc.org.nz](http://nzfvc.org.nz)

---

