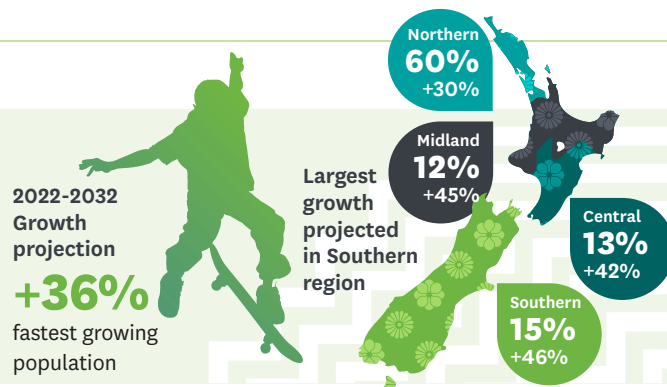
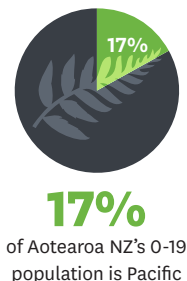
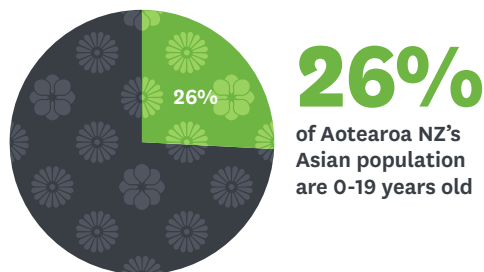
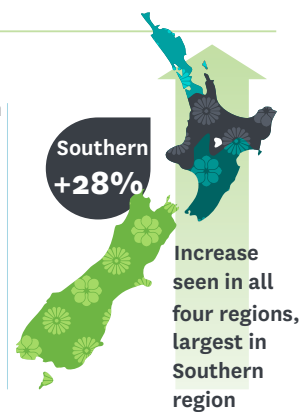
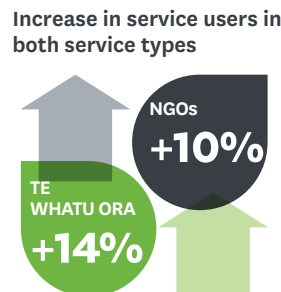
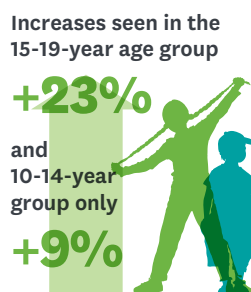
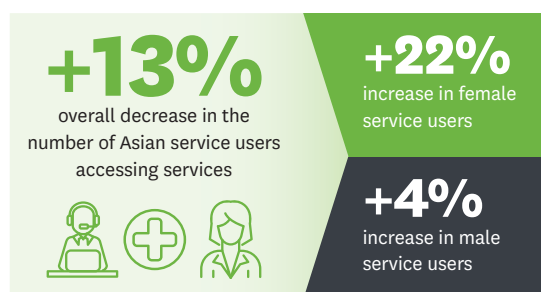


Asian National Overview

Population 2022-2032



Asian 0-19 yrs service user access to ICAYMH/AOD services, 2019 to 2021:

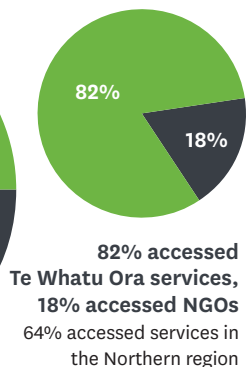
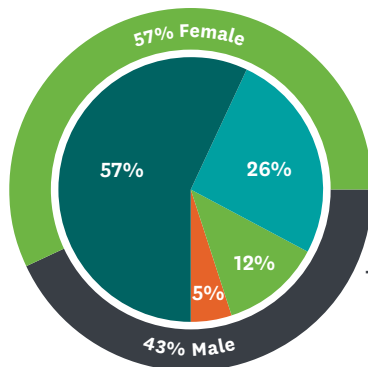


Asian 0-19 yrs service user access to ICAYMH/AOD services, 2021:

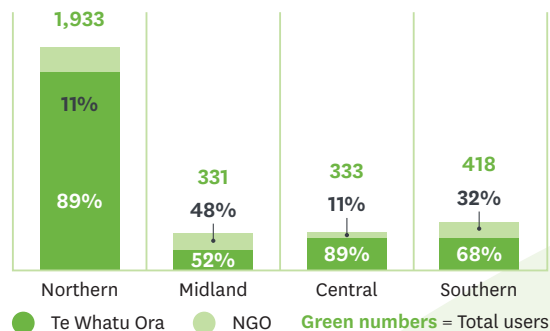
Asian total service users:

5%

- 15-19-year-olds
- 10-14-year-olds
- 5-9-year-olds
- 0-4-year-olds

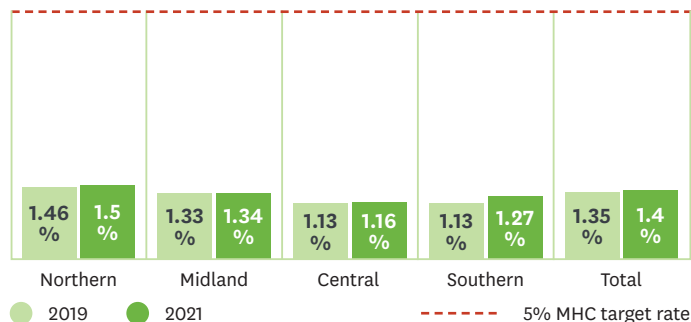


Asian 0-19 yrs service users by region

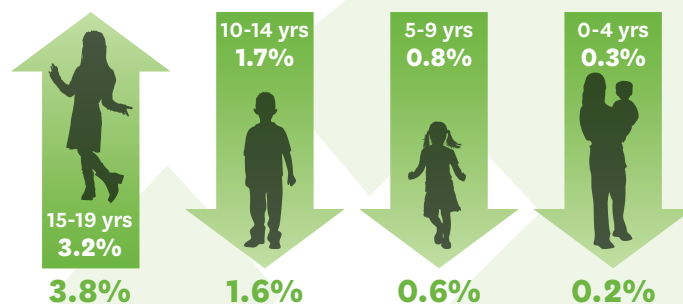


Asian access rates 2019 to 2021:

Asian 0-19 yrs user access rates by regio

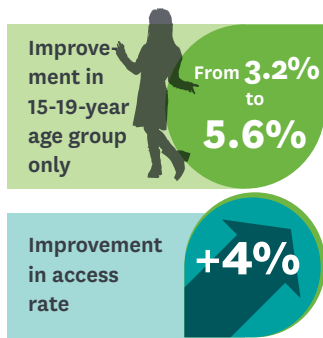


Asian user access rates by age group

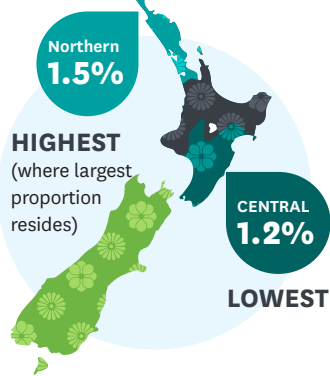


Find out more at wharaurau.org.nz/stocktake

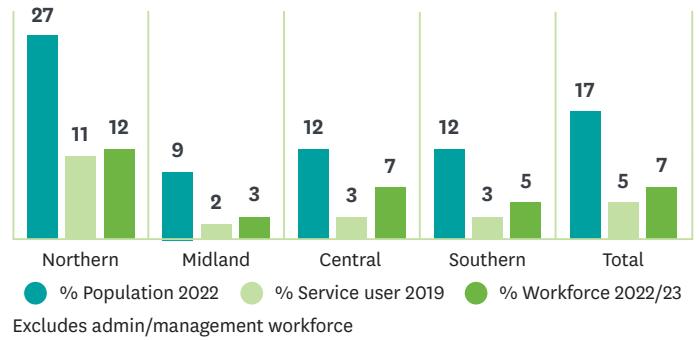
Asian access rates 2019-2021:



2021

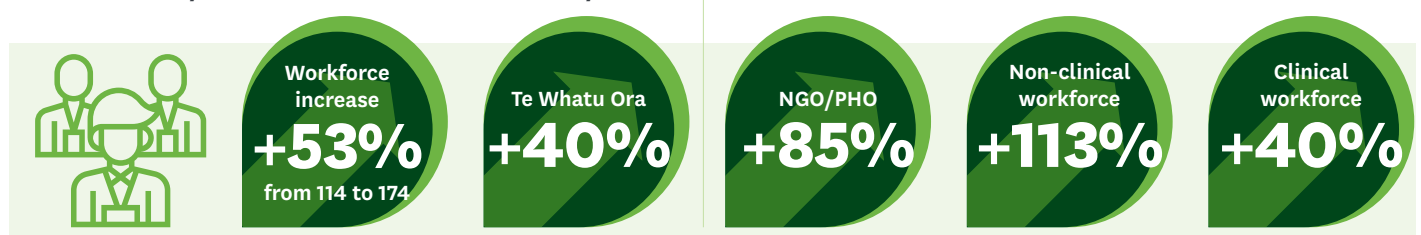


Asian 0-19 yrs population, service user and workforce comparisons

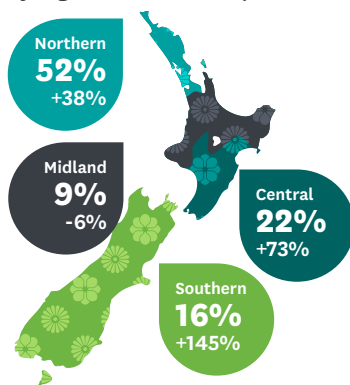


2021: Lowest access rate (1.4%) out of the four ethnic groups (Other ethnicity 5.7%, Māori 5.1%, Pacific 2.4%)

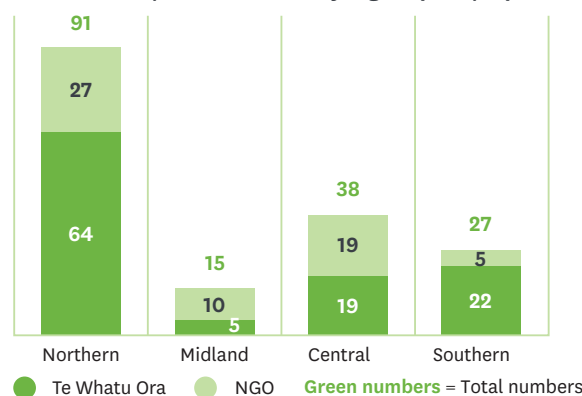
Asian ICAYMH/AOD workforce, 2020 to 2022/23



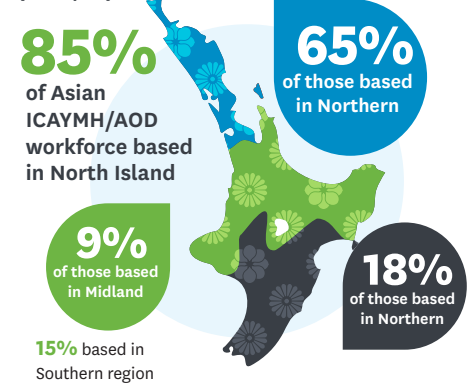
Changes in workforce numbers by region, 2020 to 2022/23



Asian ICAYMH/AOD workforce by region (2022/23)*

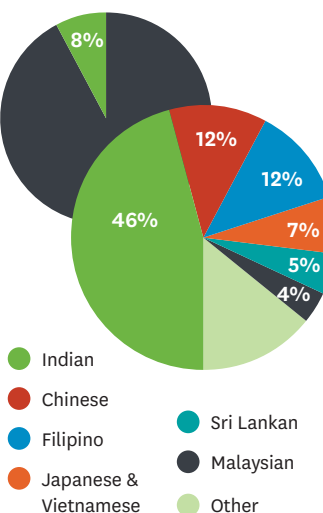


Asian ICAYMH/AOD workforce distribution (2022/23)

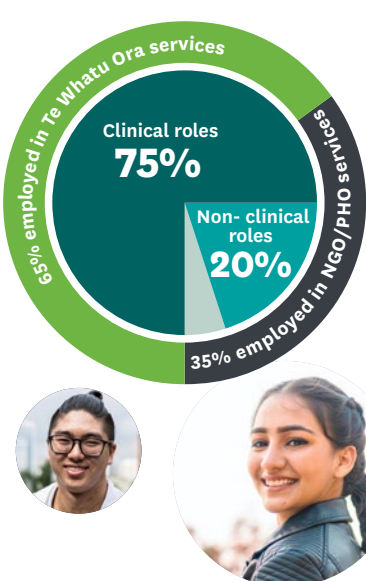


Asian ICAYMH/AOD workforce by ethnicity (2022/23)

Asian workforce made up 8% of the total ICAYMH/AOD workforce.



Asian ICAYMH/AOD workforce employers and roles (2022/23)



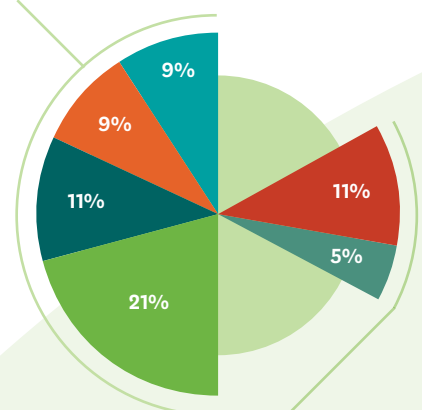
Clinical roles (75% of total) comprised:

- Nurses
- Psychologists
- Social Workers
- Occupational Therapists



Non-clinical roles (20% of total) comprised:

- Mental health support workers
- Youth workers



Find out more at wharaurau.org.nz/stocktake