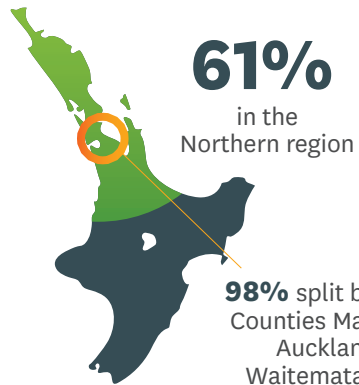
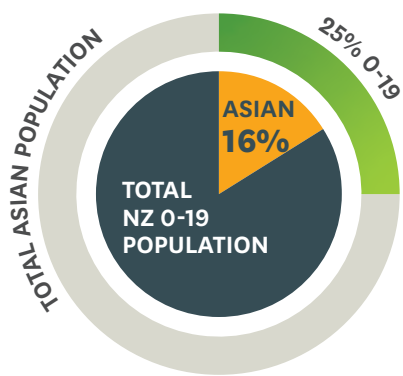




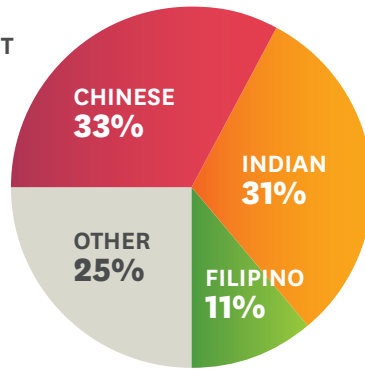
The ICAMH | AOD Stocktake 2020 Asian Summary

POPULATION

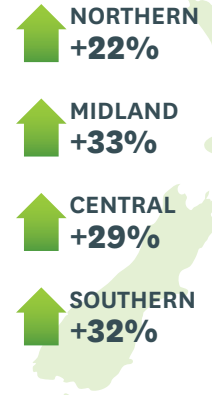
Asian infant, child, and adolescent (0-19 years) population



3 LARGEST ASIAN ETHNIC GROUPS:

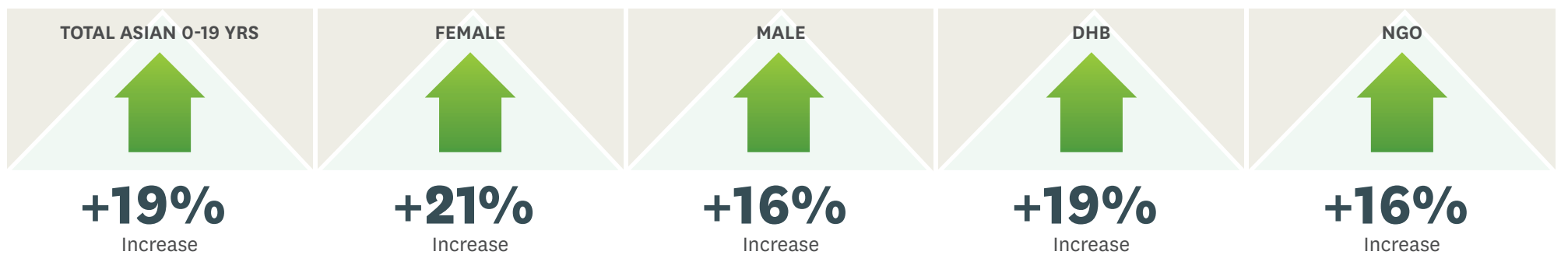


+26%
growth expected from 2020 to 2030. Largest growth out of all ethnicities.

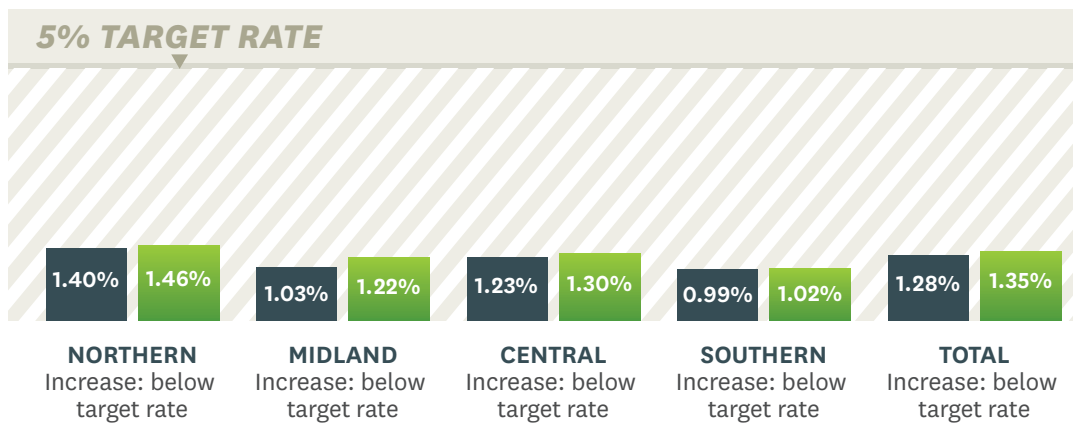


SERVICE USER ACCESS

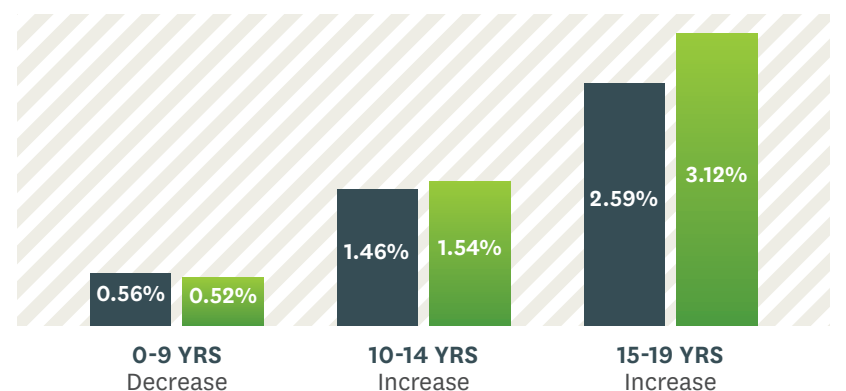
Asian service user access to ICAMH/AOD Services, 2017-2019



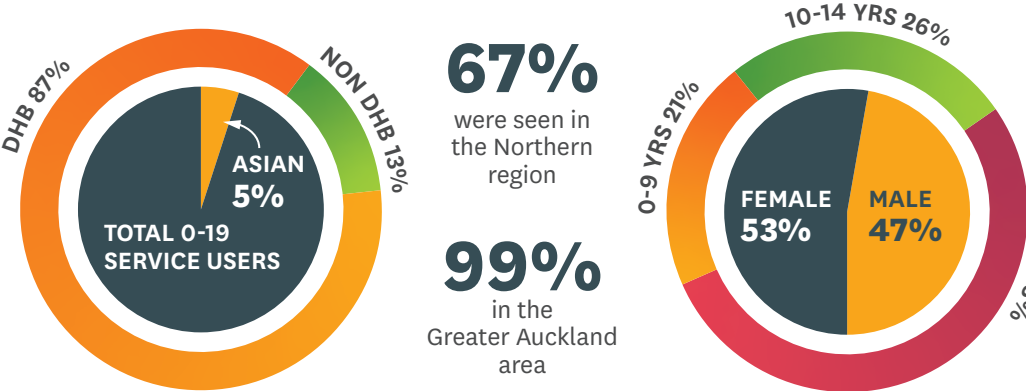
Asian service user access rates by region, 2017-2019



Asian service user access rates by age group, 2017-2019

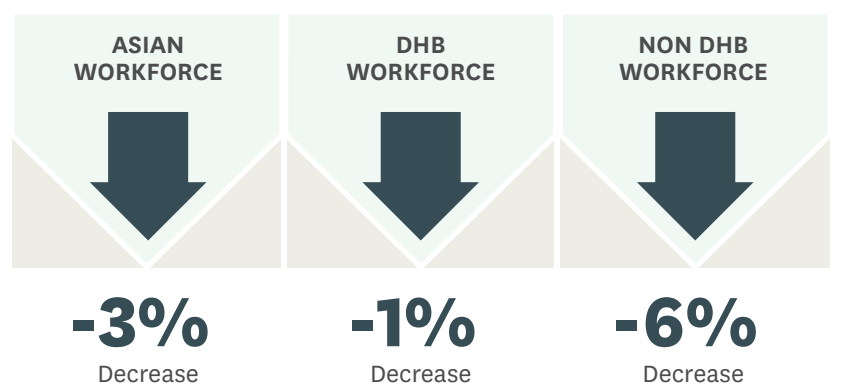


Asian service users 2019



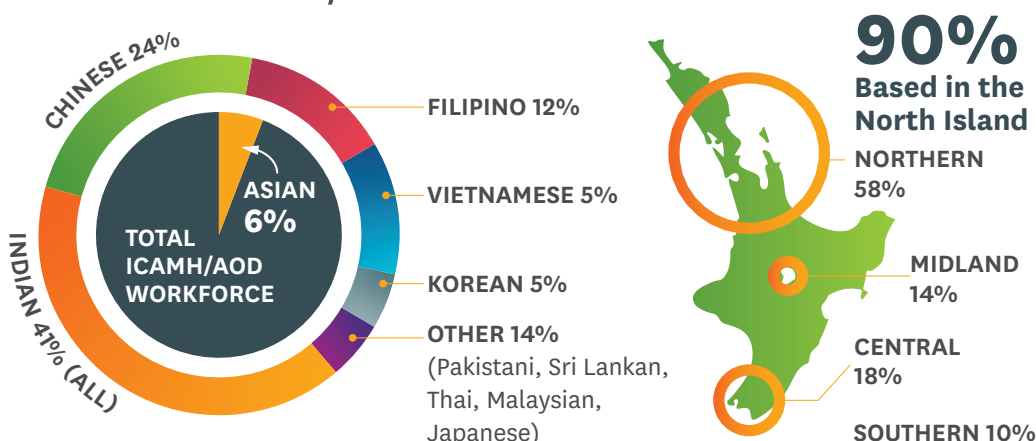
WORKFORCE

Asian ICAMH/AOD workforce 2018 to 2020/21:



WORKFORCE

Asian workforce 2020/21



82% IN CLINICAL ROLES:

- NURSES 24%
- PSYCHOLOGISTS 15%
- SOCIAL WORKERS 10%
- AOD PRACTITIONERS 10%

18% IN NON-CLINICAL ROLES: (Including admin & management roles)

- MENTAL HEALTH SUPPORT WORKERS 11%

